



All about SEA finance and data capacity and tracking ESSER spending

February 15, 2022

Marguerite Roza
Hannah Jarmolowski

Photo is for illustrative purposes only.
Any person depicted in the photo is a model.

Agenda

- I. SEA capacity
- II. Tracking ESSER spending: trends and insights
- III. School-by-school spending data update

Guest speakers:
David Deschryver
Chad Aldeman

SEAs are still behind when it comes to data capacity

ESSER

- 7 states have not submitted required LEA plan links to USED¹
- 5 states have public-facing systems tracking how districts are spending ESSER that are easily accessible and detailed: KS, LA, NC, NM, SD
 - 16 others have some level of public tracking on how districts are spending ESSER: AK, AL, AR, CA, GA, HI, IN, KY, MA, ND, OH, RI, SC, TN, UT, WA

Did we miss your state? Chat us the link!

School-by-School Spending Data

- 3 states have not released any FY20 school-by-school spending data (and 2 more only have data files)
- Many states are not vetting school-by-school spending data, leading to inaccurate data and missing schools

SEAs can use ESSER to expand data/finance capacity!

A quick look at SEA websites indicates many have numerous openings for data/finance positions



1. <https://oese.ed.gov/offices/american-rescue-plan/american-rescue-plan-elementary-and-secondary-school-emergency-relief/stateplans/>

* Updated 2.27.21. For the most up-to-date information, visit <https://whitebd.co/ESSERexpenditures>

The role of SEAs, they are a-changing'

-- Bob Dylan

That was then:

SEA focuses on:

- » compliance

This is now:

SEA focuses on:

- » tracking data
- » displaying data, creating tools
- » supporting district financial choices

POLL:

For your SEA (or SEAs you work with), is it a priority to add data/financial capacity?

- a) Yes, a top priority
- b) We'd like to but ____ stands in the way (tell us in the chat)
- c) Honestly, I'm not hearing a lot about data/finance capacity right now.
- d) Other (tell us in the chat)

Let's take a look at how SEAs are tracking ESSER spending in districts....

ARP's ESSER3 funds are flowing...

What do we know about how this money is getting spent??

3/11
ARP
passes

USED approves most
SEA "plans" and releases
remaining 1/3



USED releases
2/3 ESSER3
(\$81B) 3/24.
Remaining 1/3
released when
state plans
approved.

Districts
permitted
to begin
spending

Districts submit
"plans" for SEA
approval

Note that
"plans" are
different from
spending.

Today

What do we know about how this money is getting spent??

Wait, aren't we tracking ESSER expenditures?

Well, sort of.

1. SEAs are gathering and starting to share spending data
2. USED tracks the pace of spending.
3. USED will require a bigger collection in FY 2023.

Let's talk about this

USED approves most SEA plans and releases remaining 1/3

3/11 ARP passes

Mar Apr May Jun Jul Aug Sep Oct

2020-21

USED releases 2/3 ESSER3 (\$81B) 3/24. Remaining 1/3 released when state plans approved.

Districts permitted to begin spending

As districts spend \$, they file for reimbursement from SEA.

Districts submit "plans" for SEA approval

USED portal tracks some of this info

USED will require a bigger collection in FY 2023

How SEAs can gather the data...

Our recommendations:

- DO use existing grant tracking systems (reimbursement data through egrants)
- DO capture spending by function (instruction, admin, transportation)
- DO capture spending by object (salaries, benefits, supplies, contracts)

Low hanging fruit:
Function/object already
exist in district financial
systems.

Function codes

- 2000 **Support Services.** Support services provide administrative, technical (such as guidance and health), and logistical support to facilitate and enhance instruction. These services exist as adjuncts for fulfilling the objectives of instruction, community services, and enterprise programs, rather than as entities within themselves.
- 2600⁵ **Operation and Maintenance of Plant.** Activities concerned with keeping the physical plant open, comfortable, and safe for use and with keeping the

Object codes

- 101 **Salaries Paid to Teachers.**
- 102 **Salaries Paid to Instructional Aides or Assistants.**
- 103 **Salaries Paid to Substitute Teachers.**

How SEAs can gather the data... (cont.)

Our recommendations:

- DO itemize expenditure data for the 20% for learning loss
- DO ask districts to clarify if any interventions added learning time.

(For each reimbursement of the 20%, mark Y/N if any applies)

- a. Summer learning
- b. Afterschool programs
- c. Extended Instructional time (school day, school week, or school year)
- d. Tutoring

There is heightened interest in the 20%

Can use a dropdown menu to ask districts if they used any of these 4 time-adding strategies.

How SEAs can gather the data... (cont.)

Our recommendations:

- When setting up entirely new tracking codes, expect a learning curve.
- When most spending is reported as “other,” add more options.

=> When states create new tracking systems and include an “other” category, that can easily become the largest category.

WA tracks districts' 80%:

28 % Sanitization

11 % Assist Disadv.

8 % Tech

6 % HVAC

1 % Mental Health

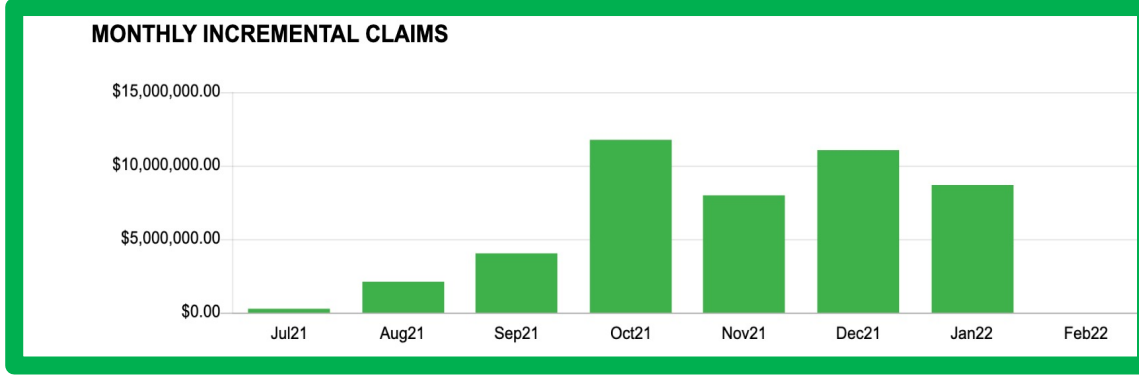
<1 % Summer/After Sch

49 % Other

How SEAs can share the data...

Our recommendations:

- DO let users easily choose their district
- DO update the information regularly
- DO tell users when the data were last updated



Washington posts its spending data monthly

Last Refresh Date: Tuesday, January 25, 2022
Refresh Frequency: Quarterly

South Carolina lists the date of most recent data refresh

Indiana's site lets users choose a district, county, and fund

School Corporation: All

Corporation ID: All

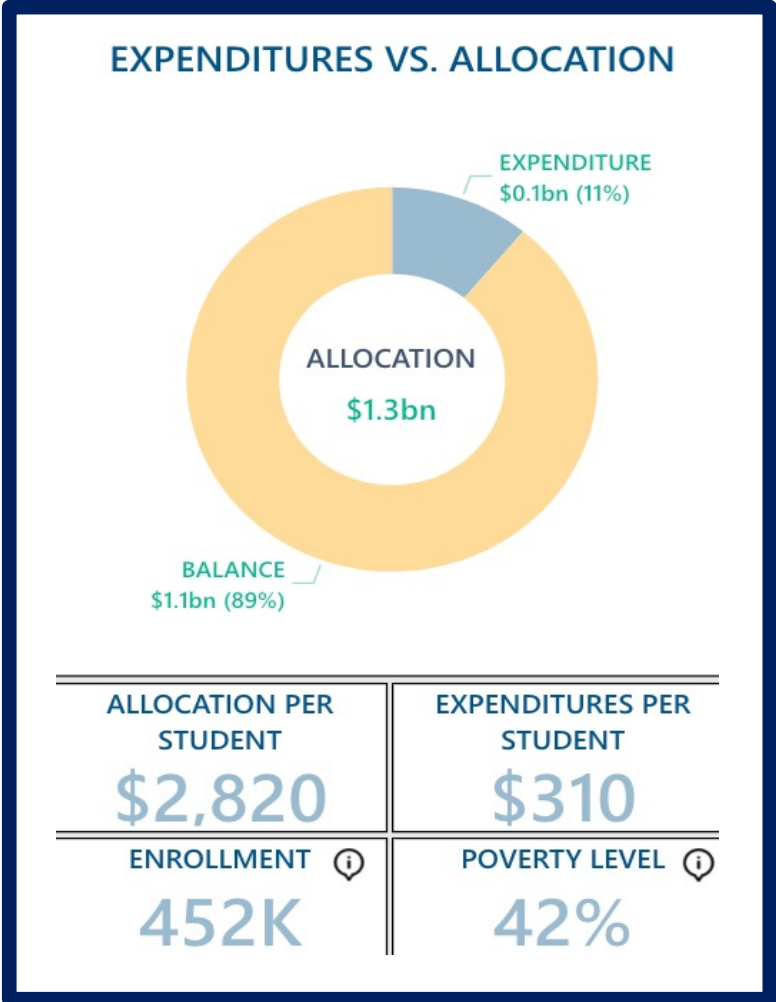
County: All

Fund: All

How SEAs can share the data (cont.)...

Our recommendations:

- DO let users see how much has been spent so far
- DO itemize spending for the 20% on learning loss
- DO give users a way to email/call with questions or errors
- DO link to the tracker on the SEA homepage



Kansas clearly shows how much has been spent so far

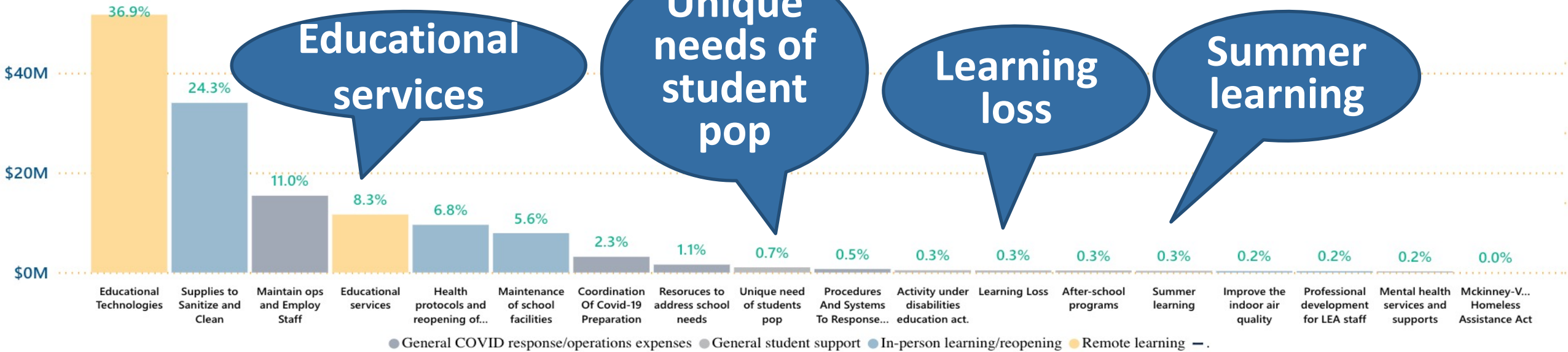
Kansas also contextualizes the figures by putting them in per pupil terms

How SEAs can share the data (cont.)...

Our recommendations:

- DO consider the utility of the data before anchoring it in display (e.g. “allowable use” categories overlap which makes the data less valuable)

EXPENDITURES BY ESSER ALLOWABLE USE ⓘ



How SEAs can share the data (cont.)...

Our recommendations:

- **Maintain a focus on STUDENTS and student progress.**
- DO link to district plans and any recent student outcomes

Chat: what ideas do you have to connect spending with student progress.

ESSER needs a North Star



Everyone wants data on ESSER money

In thinking about what to track, it helps to consider how we want the data to be used.

- A. For advocacy to make the case for continued federal funding.
- B. For equity to ensure dollars were deployed fairly across schools.
- C. For research to learn (after the fact) about choices and effects on students.
- D. For continuous improvement so leaders can make mid-course corrections to improve outcomes.
- E. For transparency (and accountability) so the public (community, taxpayers, etc.) can see where the money went.

POLL: *Which do you think is the most important?*

For continuous improvement, district leaders need data SOONER RATHER THAN LATER:

- ✓ Data on implementation
- ✓ Rates of participation
- ✓ Intermediate outcomes
- ✓ Dollars deployed across schools/student types
- ✓ Other

POLL:

Whose job is it to collect these kinds of data?

- A. Feds
- B. SEA
- C. District
- D. School
- E. Other

Quick pivot to looking at school-by-school expenditure data...

USED is monitoring SEA reporting of school-by-school expenditures

- » \$ **broken out** into federal and state/local
- » \$ amounts are listed in **per-pupil** terms
- » Data are located on the school's **report card**
- » Data use **real salaries** (rather than average)

Is USED checking for accuracy? For inclusion of all schools?

Chat us: Have you heard from USED about your state's school-by-school spending data?

FY 19 Data

State	FY 18-19 Data Available	Data are Located on the Report Card	Separates Federal \$ from St/Local \$	Data are in per-pupil terms	Data appear accurate	Data are complete (no missing data)
	50	46	48	43	43	15
Alabama						
Alaska						
Arizona						
Arkansas						
California						
Colorado						
Connecticut						
Delaware						
District of Columbia						
Florida						
Georgia						
Hawaii						
Idaho						
Illinois						
Indiana						
Iowa						
Kansas						
Kentucky						
Louisiana						
Maine						
Maryland						
Massachusetts						
Michigan						

State	FY 18-19 Data Available	Data are Located on the Report Card	Separates Federal \$ from St/Local \$	Data are in per-pupil terms	Data appear accurate	Data are complete (no missing data)
	50	46	48	43	43	15
Minnesota						
Mississippi						
Missouri						
Montana						
Nebraska						
Nevada						
New Hampshire						
New Jersey						
New Mexico						
New York						
North Carolina						
North Dakota						
Ohio						
Oklahoma						
Oregon						
Pennsylvania						
Rhode Island						
South Carolina						
South Dakota						
Tennessee						
Texas						
Utah						
Vermont						
Virginia						
Washington						
West Virginia						
Wisconsin						
Wyoming						

FY 20 Data

State	FY 19-20 Data Available	Data are Located on the Report Card	Separates Federal \$ from St/Local \$	Data are in per-pupil terms	Data appear accurate (Still under review by Edunomics Lab)	Data are complete (no missing data) (Still under review by Edunomics Lab)
	48	43	46	42		
Alabama						
Alaska						
Arizona						
Arkansas						
California						
Colorado						
Connecticut						
Delaware						
District of Columbia						
Florida						
Georgia						
Hawaii						
Idaho						
Illinois						
Indiana						
Iowa						
Kansas						
Kentucky						
Louisiana						
Maine						
Maryland						
Massachusetts						
Michigan						
Minnesota						
Mississippi						

State	FY 19-20 Data Available	Data are Located on the Report Card	Separates Federal \$ from St/Local \$	Data are in per-pupil terms	Data appear accurate (Still under review by Edunomics Lab)	Data are complete (no missing data) (Still under review by Edunomics Lab)
	48	43	46	42		
Missouri						
Montana						
Nebraska						
Nevada						
New Hampshire						
New Jersey						
New Mexico						
New York						
North Carolina						
North Dakota						
Ohio						
Oklahoma						
Oregon						
Pennsylvania						
Rhode Island						
South Carolina						
South Dakota						
Tennessee						
Texas						
Utah						
Vermont						
Virginia						
Washington						
West Virginia						
Wisconsin						
Wyoming						

Next FiDWiG: April 20 at 1PM ET

Got questions? We're here!

Marguerite Roza

mr1170@Georgetown.edu

@MargueriteRoza

Hannah Jarmolowski

HJ254@Georgetown.edu


GEORGETOWN UNIVERSITY

McCourt School of Public Policy

Certificate in Education Finance

Getting smart on education finance and strategy to impact student success

 **EDUNOMICS**
LAB The Study of Education Finance



This presentation is in the public domain. While permission to reprint is not necessary, publication should be cited. The presentation is prepared by the National Comprehensive Center under Award #S283B190028 for the Office of Program and Grantee Support Services (PGSS) within the Office of Elementary and Secondary Education (OESE) of the U.S. Department of Education and is administered by Westat. The content of the presentation does not necessarily reflect the views or policies of the PGSS or OESE or the U.S. Department of Education nor does mention of trade names, commercial products, or organizations imply endorsement by the U.S. Government. © 2019 Westat.